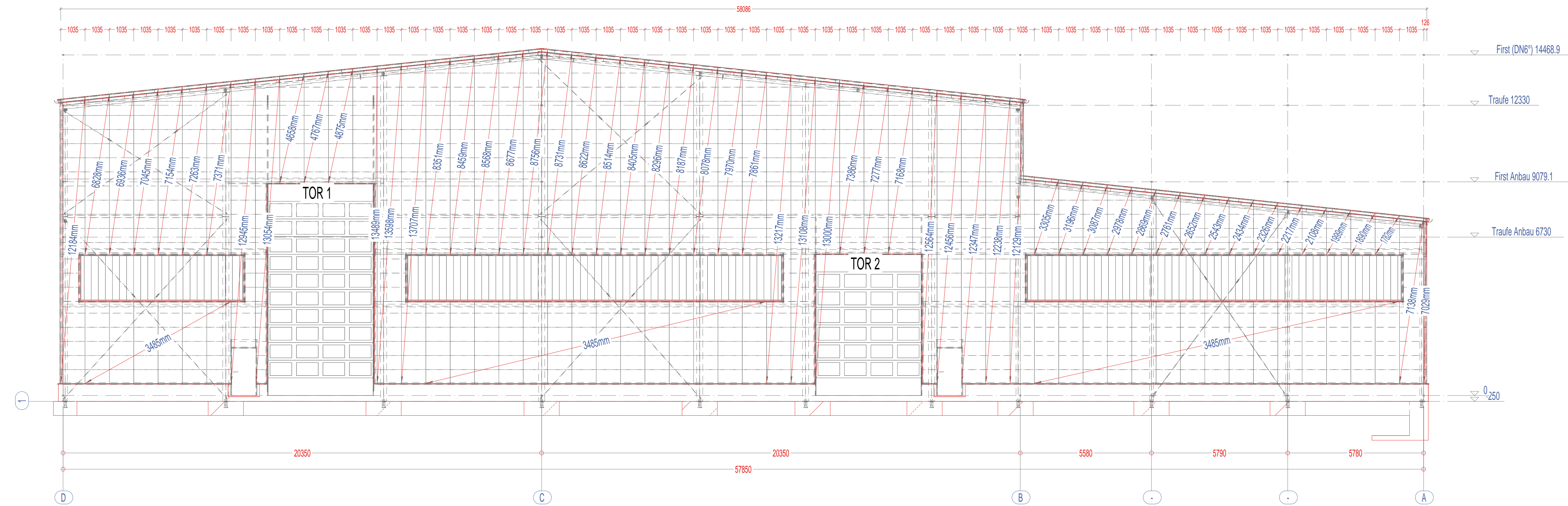
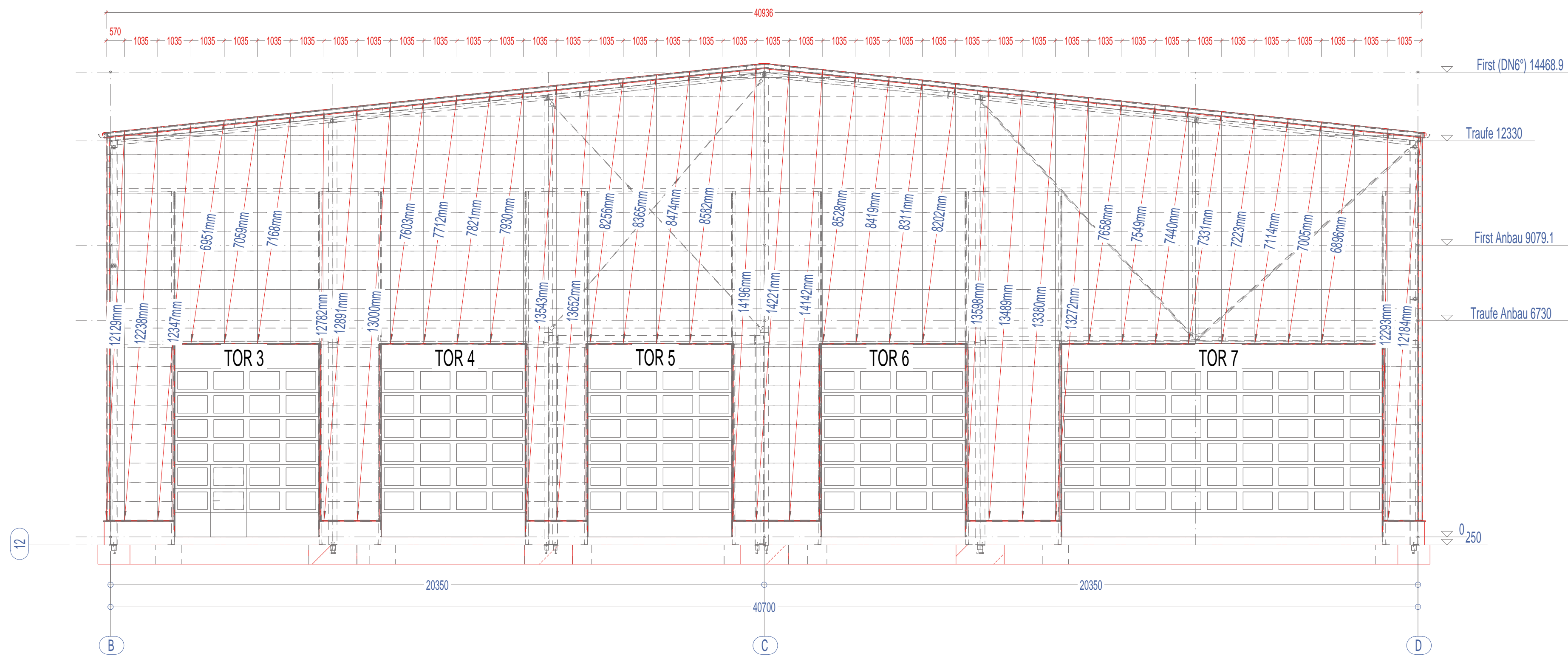


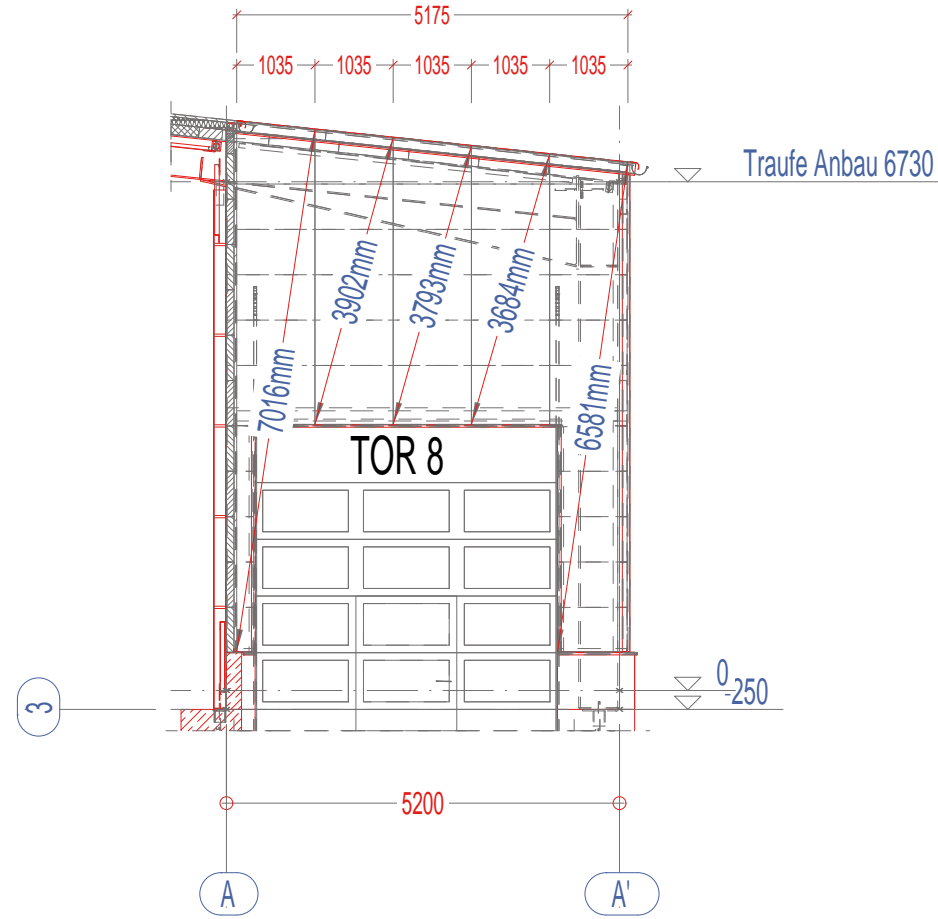
Trapezwand in Reihe 1, 1:100



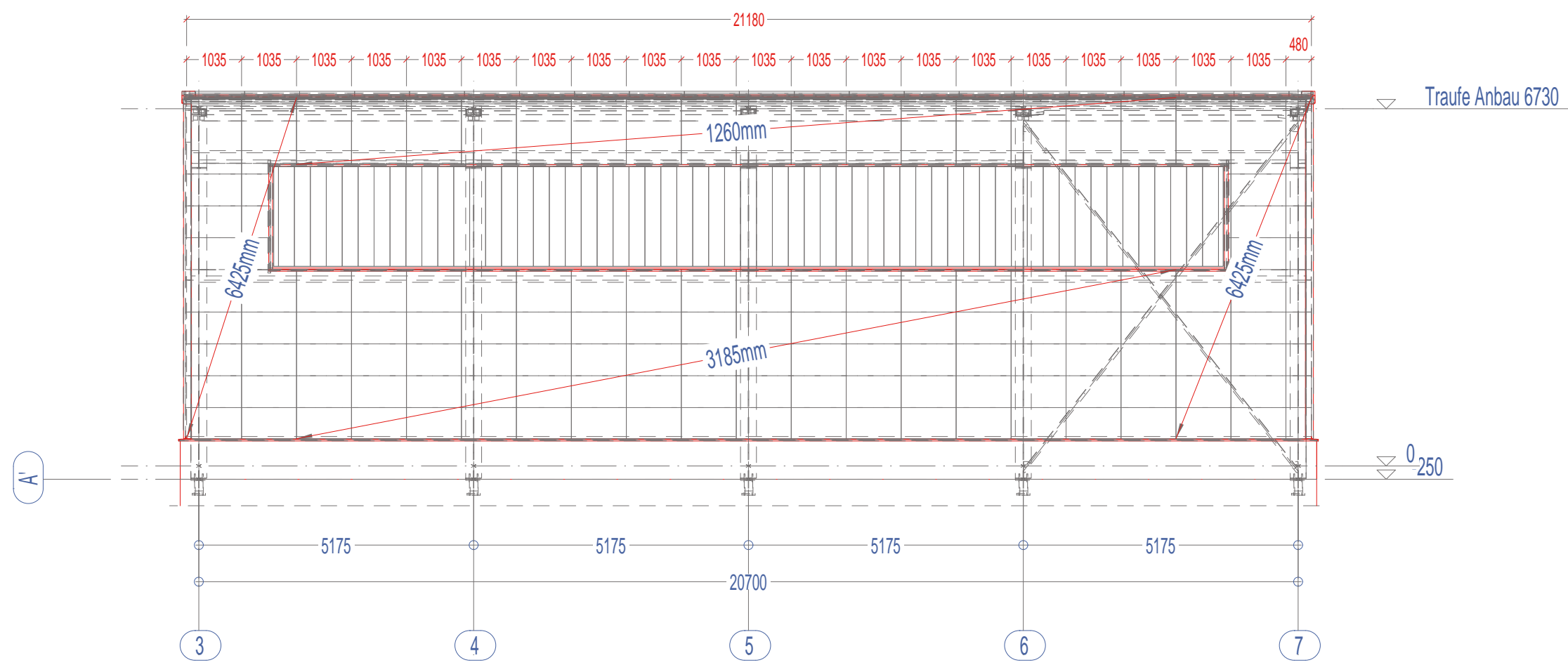
Trapezwand in Reihe 12, 1:100



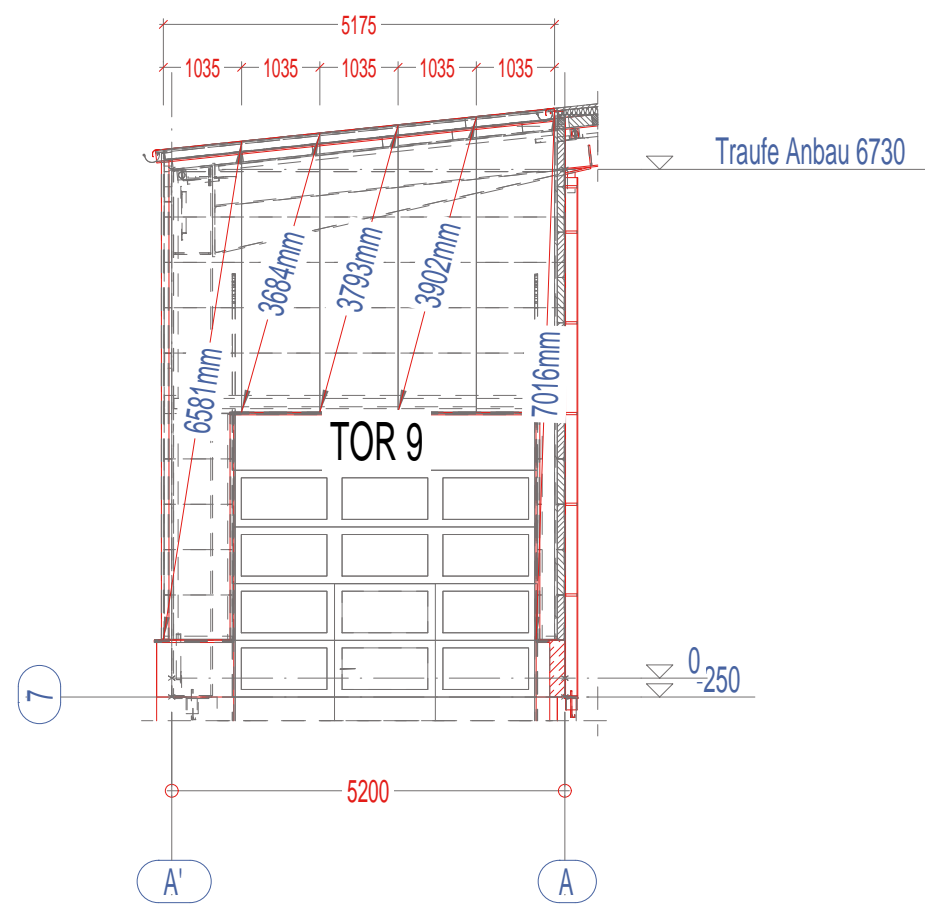
Trapezwand in Reihe 8, 1:100



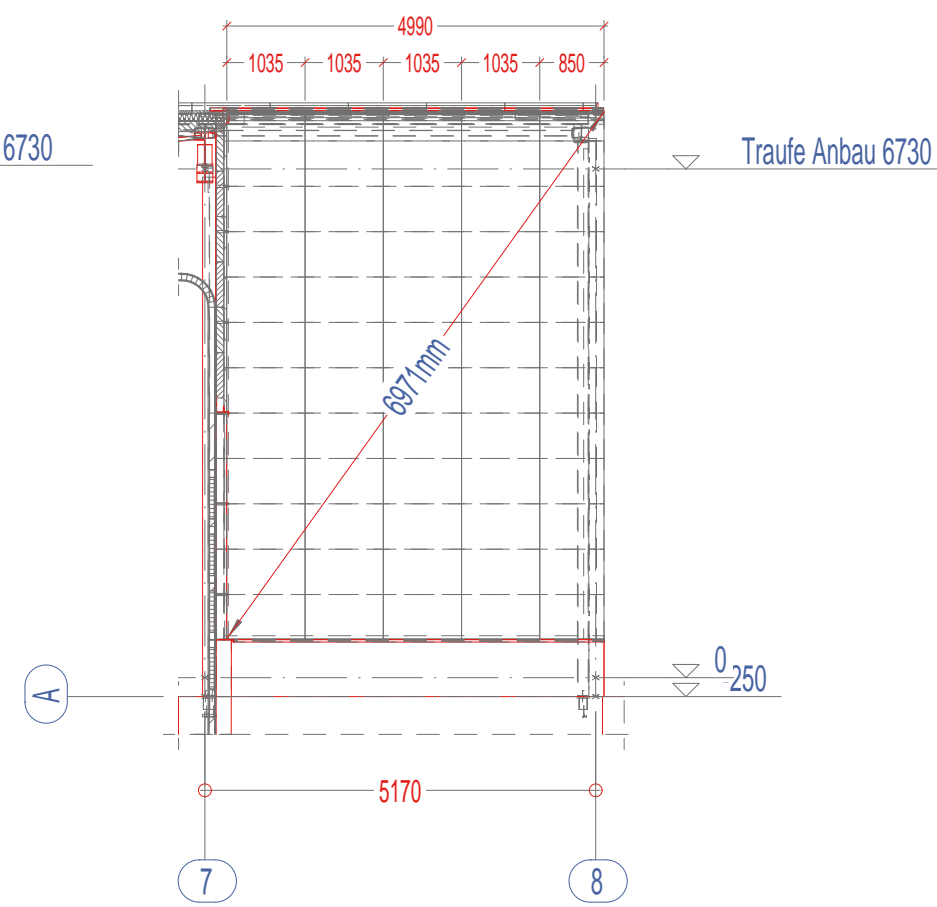
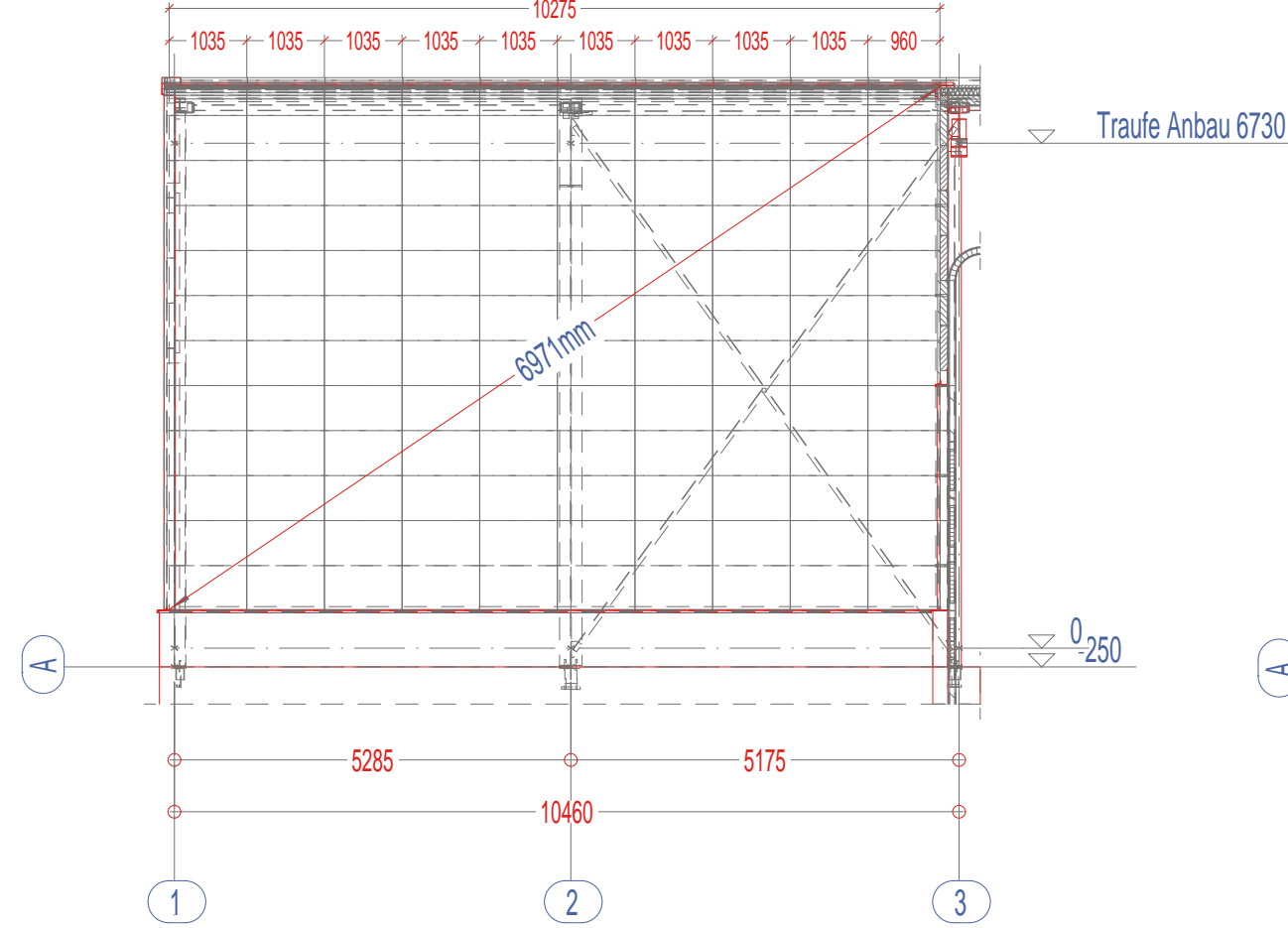
Trapezwand in Reihe A', 1:100



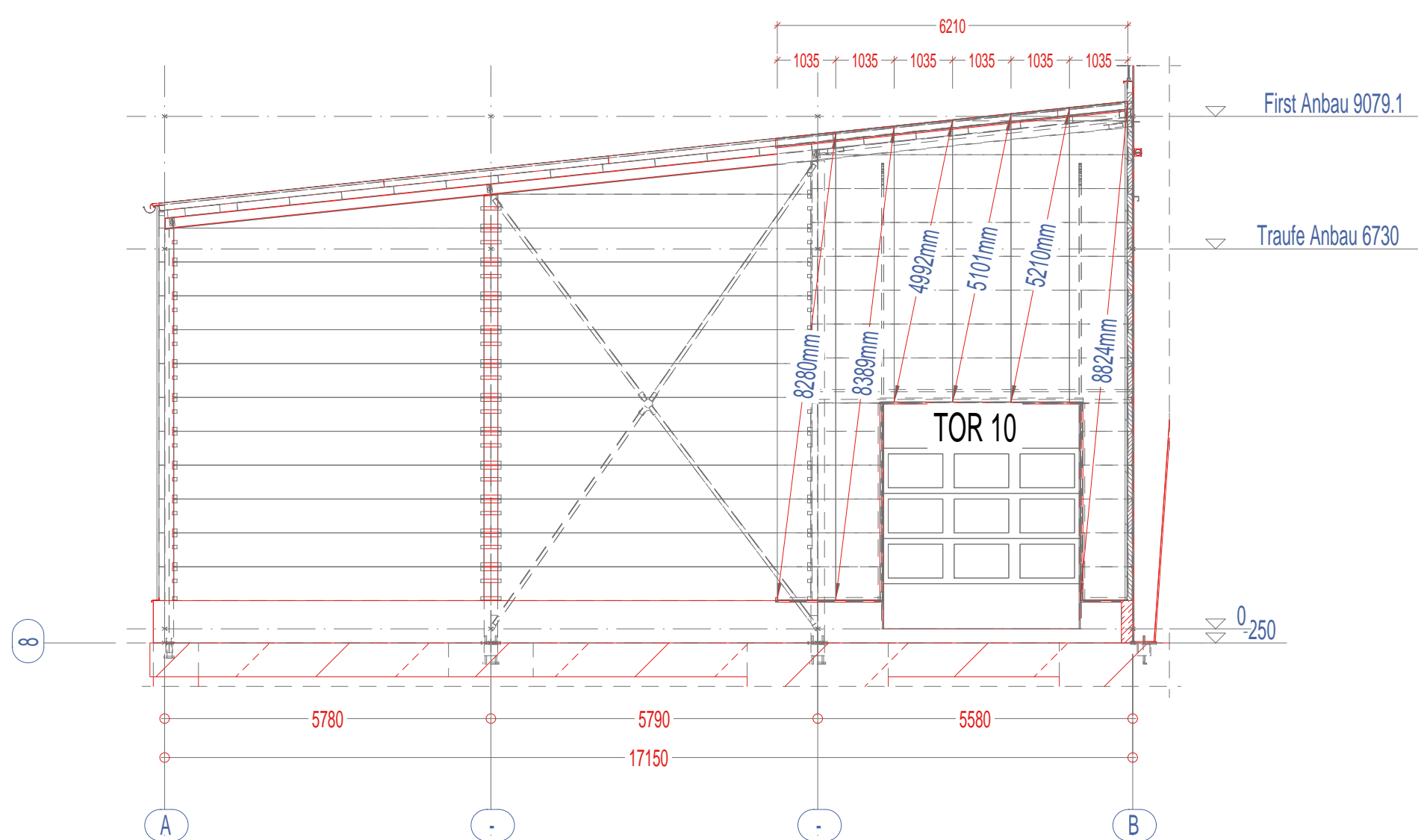
Trapezwand in Reihe 7, 1:100



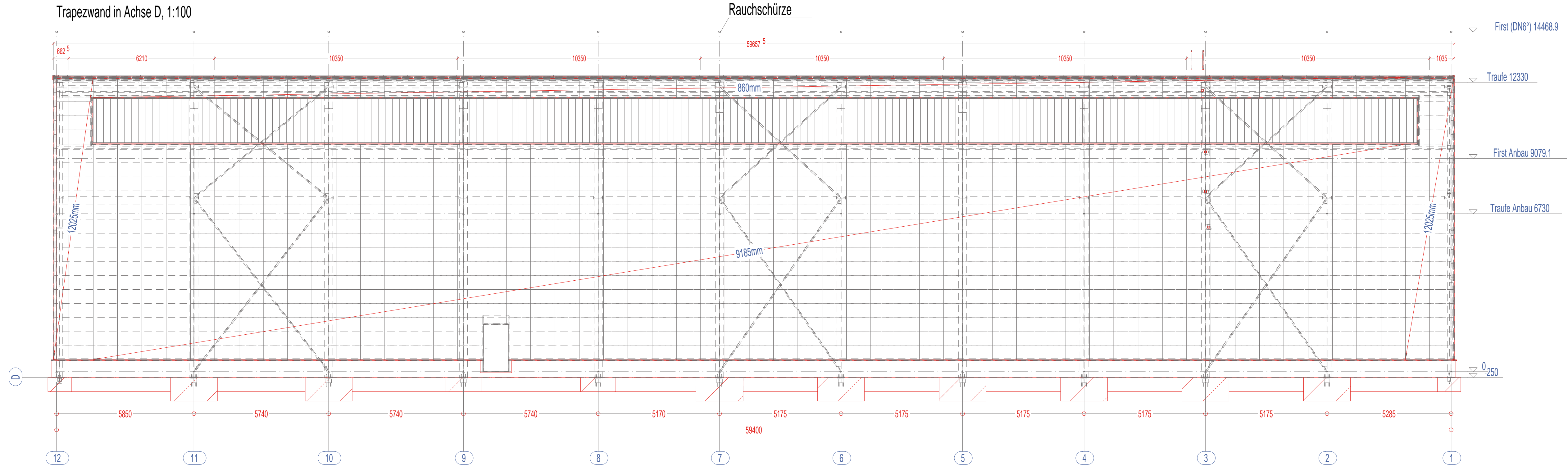
Trapezwand in Reihe A, 1:100



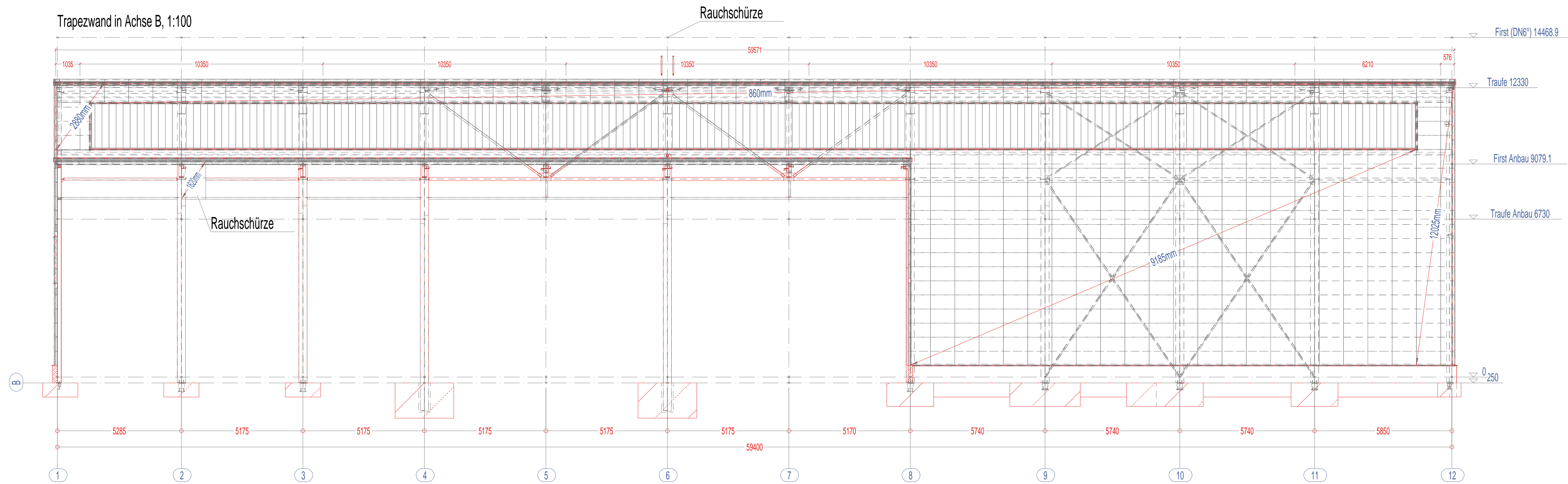
Trapezwand in Reihe 8, 1:100



Trapezwand in Achse D, 1:100



Trapezwand in Achse B, 1:100



Deckschale: Trapezblech M35/207/1035...0,75mm o. gleichwertig.

Die Befestigung erfolgt nach nach IFBS-Richtlinie 3.08, Abb. 4, Seite 12.
Stahlkassette b=600mm, Stahltrapezprofil= 35/207mm, Eckbereich = 6,0m

